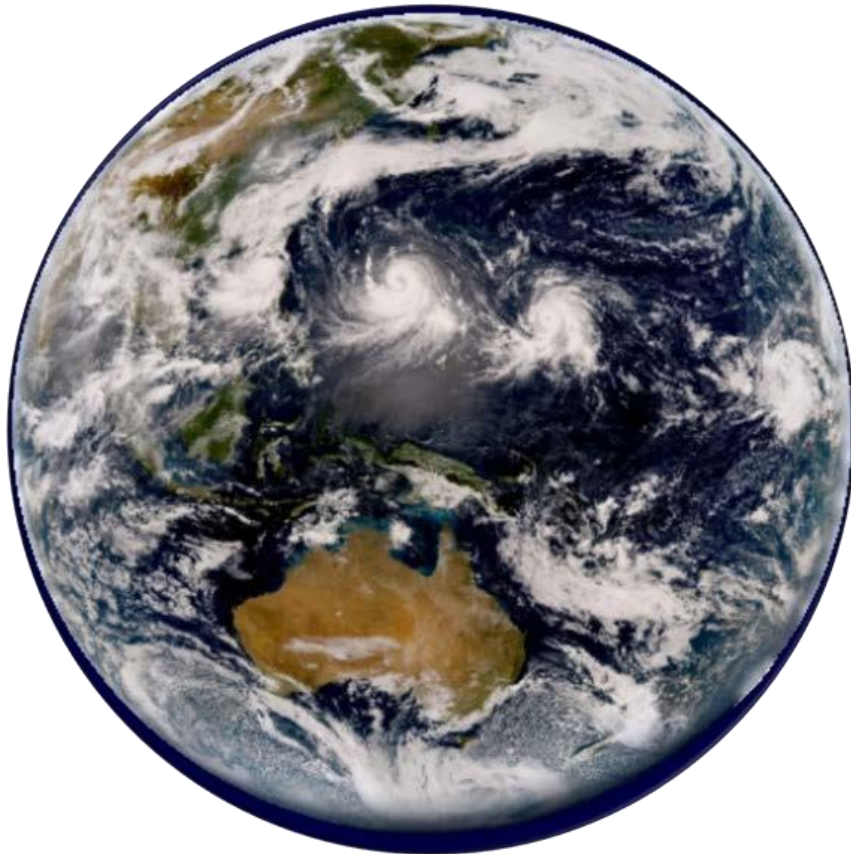


Utilization of Meteorological Satellite Data in Cloud Analysis

2024



METEOROLOGICAL SATELLITE CENTER

JAPAN METEOROLOGICAL AGENCY

MARCH 2024

1.	Outline of Meteorological Satellite Observation	1
1.1.	Observation by Meteorological Satellites	1
1.1.1.	Satellite Orbit.....	1
1.1.2.	Observation by Himawari-8/9	1
1.1.1.	Advanced Himawari Imagers on board Himawari-8/9.....	3
1.2.	Himawari-8/9 AHI Band Characteristics	4
1.2.1.	Visible Imagery.....	4
1.2.2.	Near-infrared Imagery.....	8
1.2.3.	Infrared Imagery	14
1.3.	Imagery Comparison	40
1.3.1.	Daytime Imagery.....	40
1.3.2.	Nighttime Imagery.....	43
1.4.	RGB Composite Imagery	47
1.4.1.	Principles of RGB Composite Imagery	47
1.4.2.	RGB Composite Imagery Characteristics	47
2.	Cloud Type Identification via Meteorological Satellite Observation	63
2.1.	Via Satellite Imagery	63
2.2.	Cloud Type Classification	64
2.3.	Principles of Subjective Identification	65
2.3.1.	Visible and Infrared Imagery	65
2.3.2.	Identification via Form	66
2.3.3.	Identification via Texture	66
2.3.4.	Identification via Movement	66
2.3.5.	Identification via Temporal Evolution.....	66
2.4.	Examples.....	67
2.4.1.	Identification from Visible and Infrared Imagery	67
2.4.2.	Cb and Cg Examples.....	68
2.4.3.	Ci and Cb Examples.....	69
2.5.	Differences Between Cloud Types Identified via Meteorological Satellites and Cloud Forms in Surface Observation.....	70
2.5.1.	Introduction	70
2.5.2.	Case Studies	71
3.	Cloud Patterns	85
3.1.	Ci Streaks.....	85

3.2.	Transverse Lines	86
3.3.	Orographic Ci Clouds	88
3.4.	Anvil Ci	91
3.5.	Bulge.....	94
3.6.	Hook Patterns.....	95
3.7.	Lee Wave Clouds.....	96
3.7.1.	Environmental Conditions for Lee Wave Clouds.....	96
3.7.2.	Relationship Between Intervals of Lee Wave Clouds and Wind Speed	98
3.8.	Open Cells.....	100
3.9.	Closed Cells.....	102
3.10.	Cloud Streets.....	104
3.11.	Enhanced Cu.....	105
3.12.	Cb Cloud Clusters.....	107
3.13.	Central Dense Overcast (CDO) areas	111
3.14.	Carrot-Shaped Clouds	113
3.15.	Cloud Bands	116
3.16.	Cloud Lines	118
3.17.	Rope Clouds.....	119
3.18.	Karman Vortices	121
3.19.	Belt-Form Convective Clouds	125
3.20.	Ship Trails	132
4.	Water Vapor Patterns	135
4.1.	Introduction	135
4.1.1.	Dark Regions	135
4.1.2.	Bright Regions.....	135
4.1.3.	Darkening.....	135
4.1.4.	Dry Intrusion.....	136
4.1.5.	Dry Slots	137
4.1.6.	Upper Troughs.....	139
4.1.7.	Upper Vortices	140
4.2.	Boundaries	142
4.2.1.	Boundaries Related to Jet Streams	142
4.2.2.	Boundaries Exhibiting Blocking	146
4.2.3.	Boundaries Exhibiting a Surge	149
4.2.4.	Others	153
4.3.	Analysis Using Water Vapor Imagery.....	155

4.3.1.	Cold Lows.....	155
4.3.2.	Upper Cold Lows (UCLs).....	156
4.3.3.	Promotion of Convective Activity.....	158
5.	Synoptic-scale Phenomena.....	161
5.1.	Front Analysis.....	161
5.1.1.	Concept of Fronts	161
5.1.2.	Warm Fronts.....	163
5.1.3.	Cold Fronts	165
5.1.3.1.	Ana Cold Fronts.....	165
5.1.3.2.	Kata Cold Fronts	167
5.1.3.3.	Points to Note Regarding Analysis.....	169
5.1.4.	Occluded Fronts	170
5.1.4.1.	Decision-making on Occlusion Points.....	170
5.1.4.2.	Cold Occlusions.....	173
5.1.4.3.	Warm Occlusions	174
5.1.5.	Stationary Fronts.....	175
5.1.5.1.	Stationary Fronts during Cold Periods.....	176
5.2.	Classification of Cyclonic Development Patterns	179
5.2.1.	Standard-type Development.....	180
5.2.2.	Comma-type Development	187
6.	Meteorological Phenomena	213
6.1.	Heavy Rain Associated with the Baiu Front.....	213
6.2.	Heavy Snow Associated with a Small Cyclone on the Western Coast of Hokkaido 219	
6.3.	Strong Winds	234
6.3.1.	Strong Winds When a Cold Front Passes.....	234
6.4.	Fog.....	240
6.4.1.	General Characteristics of Fog.....	240
6.4.2.	Daytime Fog	240
6.4.3.	Night Fog	243
6.5.	Lower Clouds	246
6.5.1.	General Characteristics of Lower Clouds.....	246
6.5.2.	Lower Clouds over the Sea	246
6.5.3.	Lower Clouds above the China Continent and the South China Sea	247
6.5.4.	The Distinctive Lower Clouds Seen around Japan	247
7.	Other Phenomena.....	257

7.1.	Sea Ice	257
7.2.	Snow	259
7.3.	Aeolian Dust	261
7.4.	Volcanic Eruptions.....	265
7.5.	Forest Fires and Smoke	268
7.6.	Sun Glint.....	271
7.7.	Solar Eclipses.....	275